

Logix[®]

New Features and Users in the News – April 2018



Logistix Solutions
On-Demand Solutions for Logistics Professionals

What's new at Logistix Solutions

Logistix Solutions' software has been used by logistics professionals around the globe to solve their critical supply chain problems. Many of our users are consultants, logistics service providers and logistics practitioners who have used Logix for their customers or for business development.

We often ask our users why they chose Logix for their value-added services and customer outreach programs. The most prevalent answers are "Ease of Use", "Quick and Accurate Results" and "Comprehensive Presentation Features".

This month's issue highlights some of the features that make Logix the supply chain tool to use when time is at a premium. The tutorials provide a refresher on the many capabilities that help our users provide compelling results that sell. Or get in touch with us and we'll be happy to help you use Logix to its maximum potential.

Robert Camozzo

President
Logistix Solutions

New Features and Users in the News – April 2018

Using Logix When Time is at a Premium for Projects That Sell

Logix was designed from its inception to be easy to use and more intuitive due to its origin as an On-Demand software application. On-Demand means Logix is used by practitioners for hundreds of applications that require rapid turnaround, effective data cleansing and validation and powerful solver technology that provides quick solutions for a large number of potential scenarios.

Whether used in commercial real estate brokerage to highlight the advantages of a particular location or facility or by warehousing and transportation service providers to present their best solutions to their prospects, the following features help make projects go smoothly:

- Excel Data Import Templates allow users to import data files with minimum set up.
- Logix data management tools can consolidate raw demand data by 3-digit or 5-digit Zip Code.
- Logix can use simple transportation cost per mile or more powerful LTL and package freight rates.
- Logix can be “dialed down” to test solutions in seconds prior to optimizing to the last penny.
- Logix lets you select Greenfield, Proximity, Best Service or Lowest Cost solutions instantly.
- Logix allows you to select specific Customers, Products or Regions for targeted analysis.
- Solutions can be exported to Excel or viewed in reports, maps and graphics for further analysis and presentation.

Unique features in Logix provide instant feedback on the quality of solutions including:

- Proximity Analysis shows the cost increase /decrease by distance from the targeted location
- Service Optimization yields number and location of DCs that meet your exact service requirement
- Metrics compare cost and service implications for any solutions including baseline and optimum.

Next, we show you how access some of these important, time saving capabilities.

USERS IN THE NEWS



LOGISTIX SOLUTIONS CONTINUES TO SUPPORT A NETWORK OF LOGISTICS SERVICE PROVIDERS, PARTNERS AND CONSULTANTS WHO PROVIDE SERVICES TO THEIR CLIENTS.

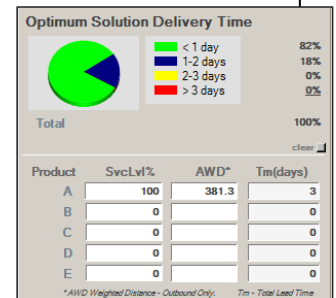
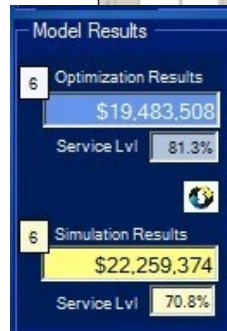
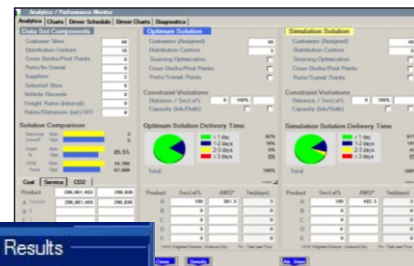
OUR LICENSING AGREEMENT ALLOWS YOU TO USE LOGIX WHEN THESE SERVICES ARE USED FOR BUSINESS DEVELOPMENT OR INTERNALLY TO OPTIMIZE YOUR SERVICE OFFERINGS AND ONLY REQUIRES YOU TO ACQUIRE AN ADDITIONAL LICENSE IF YOU RECEIVE PAYMENT FOR YOUR SERVICES.

WE MAKE THIS EASY BY GRANTING A LICENSE TO YOUR CLIENT FOR THE DURATION OF THE PROJECT – TYPICALLY A MONTH OR THREE MONTHS.

CONTACT US FOR MORE INFORMATION ABOUT OUR COST EFFECTIVE SOLUTIONS FOR CONSULTANTS AND THIRD PARTY PROVIDERS.

CONTACT info@logistixsolutions.com OR 571-426-5951 FOR MORE INFORMATION.

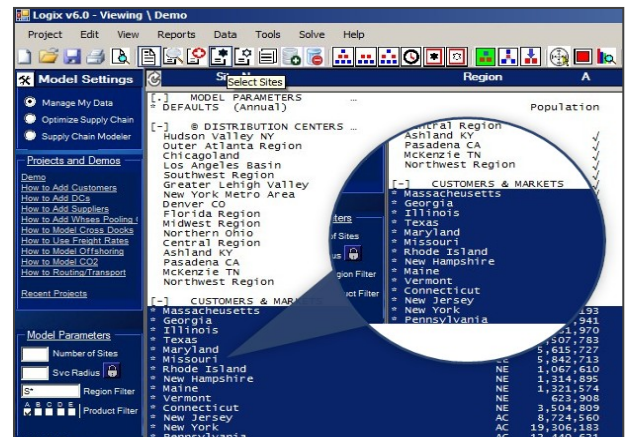
Service Level Optimization and Metrics
Compare Solutions for Service Performance



Logix 6.0 - Features That Save Time and Money

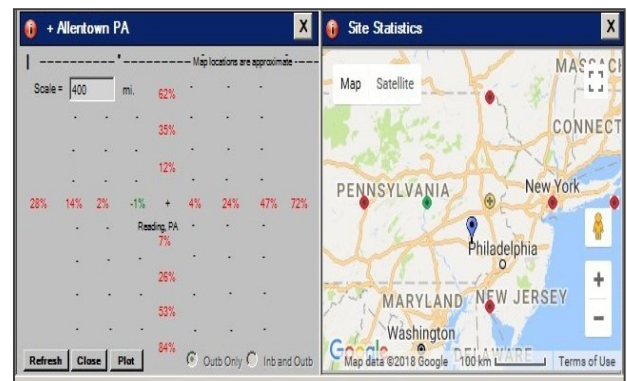
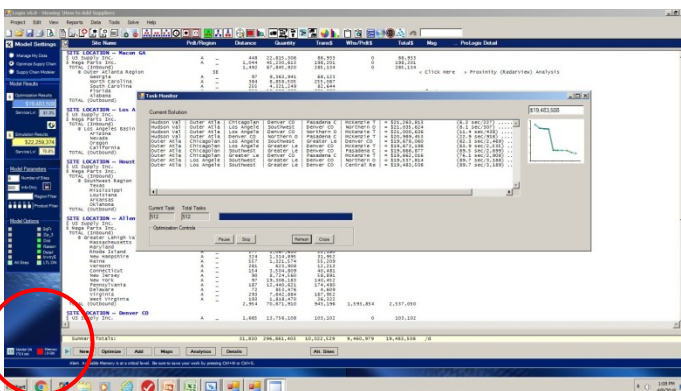
- **Logix Data Templates** – Enter Customer/Demand, Distribution Centers, Suppliers, Warehouses, Freight Rates, etc. using Excel files. You can enter demand by Quantity, Size and Count (eg. weight, cube and shipments) or just enter Quantity and a factor in the Default record to convert Quantity to Size for all your data.
- **Faster Solutions.** Logix allows you to “dial down” solutions while you are setting up complex problems. Use the Display Parameters/Network Optimization setting to reduce the Confidence Level and speed solution time. Once you are confident that you have set up the problem correctly, set the Optimizer back to 99.9%.
- **Task Monitor.** Turn on the Logix Task Monitor – bottom of the Model Settings panel on the left side of the screen. This allows you to track the optimization progress (click Refresh) or to Pause, Stop or Continue.
- **Select Specific Customers, Product Categories and Regions.** Simply select any one or many customers you want to have in the solution and ignore the rest. On Model Settings, select any combination of Product Categories (or leave this blank) or Region(s) including wildcards (eg. South* for Southeast and Southwest).
- **Run Proximity Analysis instead of Greenfield for a Quicker Solution.** Use Greenfield Analysis when you don't have any Candidate Distribution Centers in mind. Or choose Proximity Analysis to approximate a “Greenfield” solution using your existing and candidate facilities as starting points for a quicker solution.
- **Export Solutions.** Simply click on the Summary or Detailed Clipboard icon after you run a Simulation or an Optimization to view these reports and save them for further analysis or presentation. You can also select Data/Export Model Solution to export the solution to Excel use this option for clearer formatting in Excel.

| Logix Data Conversion Formats and Templates v6.0 | | | | |
|--|--------|-----------|----------------------|-------------|
| Logix Supply Chain Data Type | Format | Demo Data | Data Entry Templates | Int'l Codes |
| Suppliers and Manufacturing Plants | | | | |
| Whses/RDCs (i.e., Pooling Centers) | | | | |
| Ports, Transit Sites and Intermodal Terminals | | | | |
| Distribution Centers | | | | |
| Cross Docks | | | | |
| Customers/Demand (Network Optimization) | | | | |
| Stops/Orders (Transport Optimization) | | | | |
| Vehicles/Carriers (Transport Optimization) | | | | |
| Freight Rates (non-LTL rates) | | | | |
| Freight Rates (LTL/TL rates) | | | | |
| PC Miler/Distance Tables | | | | |



Logix Excel Data Import Template – c:/Program Files(x86)/Logix6.0

Selected Customers/Demand, Products, Regions



Logix Task Monitor – Display Network Optimization Progress

Proximity Analysis Pinpoints Alternative/Greenfield Solutions

LOGISTIX SOLUTIONS – On-Demand Technology for Logistics Professionals

Logistix Solutions was established in 2006 as a software and consulting company to provide premier technology solutions and in-depth industry knowledge for logistics professionals. We offer award-winning, on-demand Supply Chain Planning and Execution applications at a revolutionary value for rapid ROI and benefit realization.

- ❖ *Supply Chain Planning and Execution (SCP&E) software solutions offered:*
 - *Distribution Network Design and Supply Chain Optimization*
 - *Sourcing and Procurement Optimization*
 - *Service Time Optimization*
 - *Product Flow and Inventory Optimization*
 - *Transportation Optimization*
 - *Transportation Resource Scheduling and Execution*
 - *Transportation Management System*
- ❖ *Support, training and consulting services provided by experienced supply chain practitioners and logistics software experts.*

Based on extensive development working with Fortune 1000 companies, Logistix Solutions provides full-featured, on-demand supply chain solutions and consulting services for commercial real estate services, retailers, manufacturers, third party logistics providers, consultants, food and beverage and other distributors to support strategic planning and logistics execution requirements.

Logistix Solutions is proud to have won prestigious awards from Food Logistics, Supply and Demand Chain Executive and Inbound Logistics.

For more information on these awards and publications, visit our website at www.logistixsolutions.com/InTheNews.



For more information on the Logistix Solutions suite of products, visit our website at www.logistixsolutions.com
contact Logistix Solutions at 571.426.5951 or e-mail info@LogistixSolutions.com.